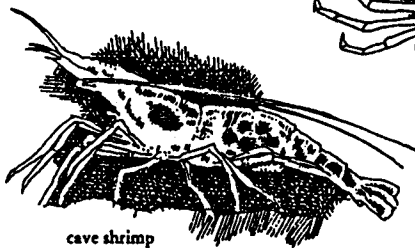


# Home Sweet Home

These animals live in caves. Some spend their entire life in the cave; others can live either on the surface or in the cave, while others are only occasional cave visitors.

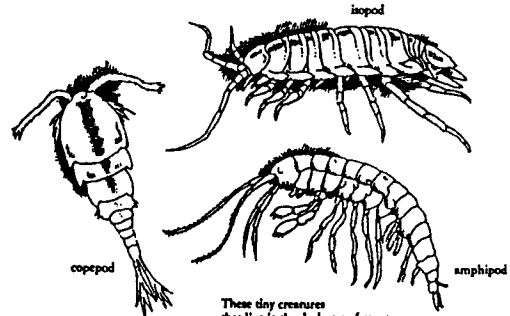
small deep-cave animals



cave shrimp



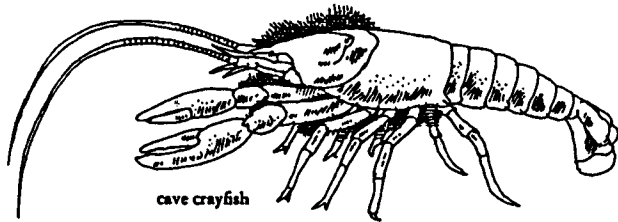
white crab



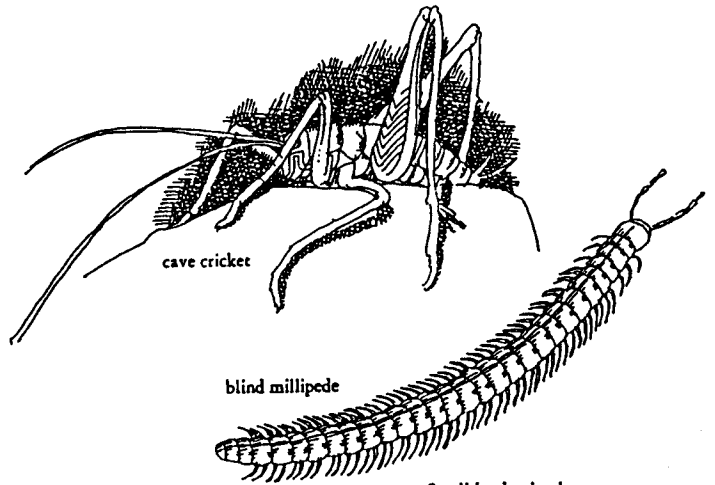
copepod

amphipod

These tiny creatures that live in the darkness of caves are related to lobsters and crabs.



cave crayfish



cave cricket

blind millipede

Small land animals work harder than water animals to find food in caves.

Eastern Pipistrelle  
*Pipistrellus subflavus*



blind cave shrimp, a permanent resident



little brown bat, a regular visitor

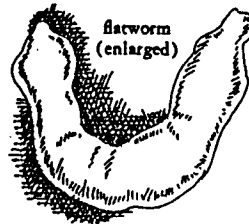


raccoon, a casual or occasional visitor

flatworms (life size)

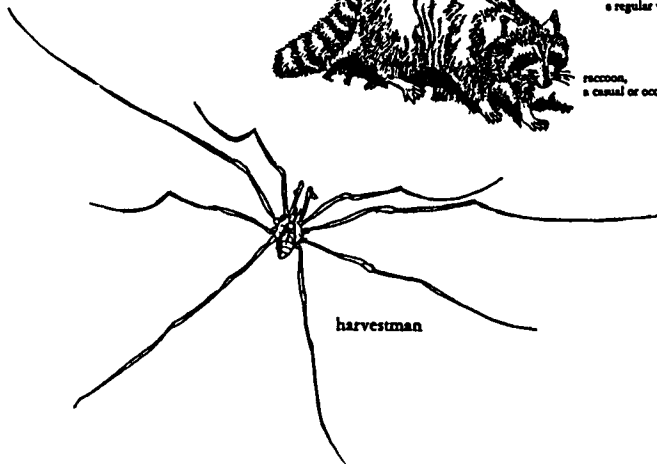
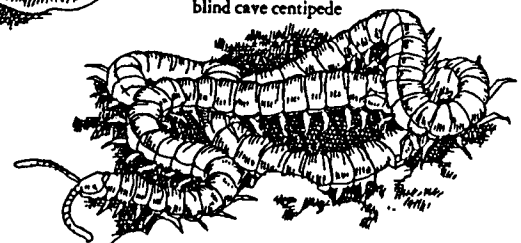


flatworm (enlarged)



deep-cave spider

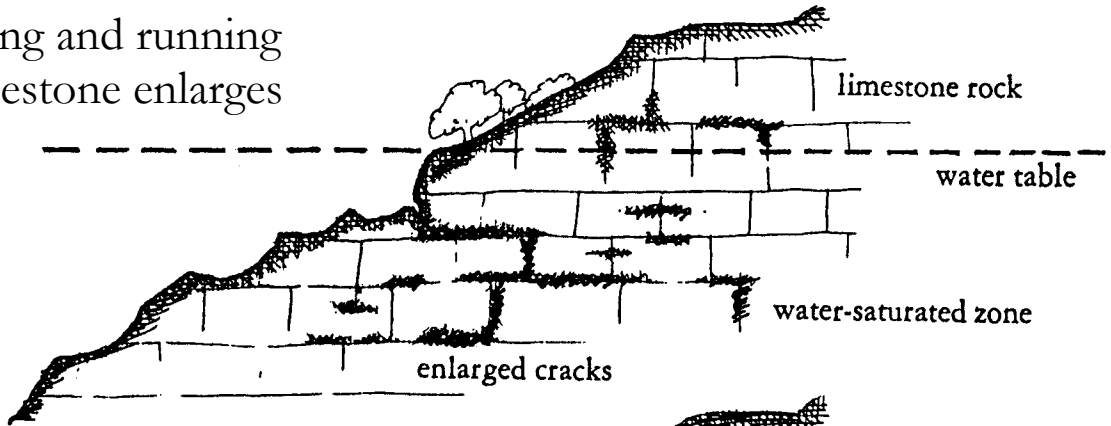
blind cave centipede



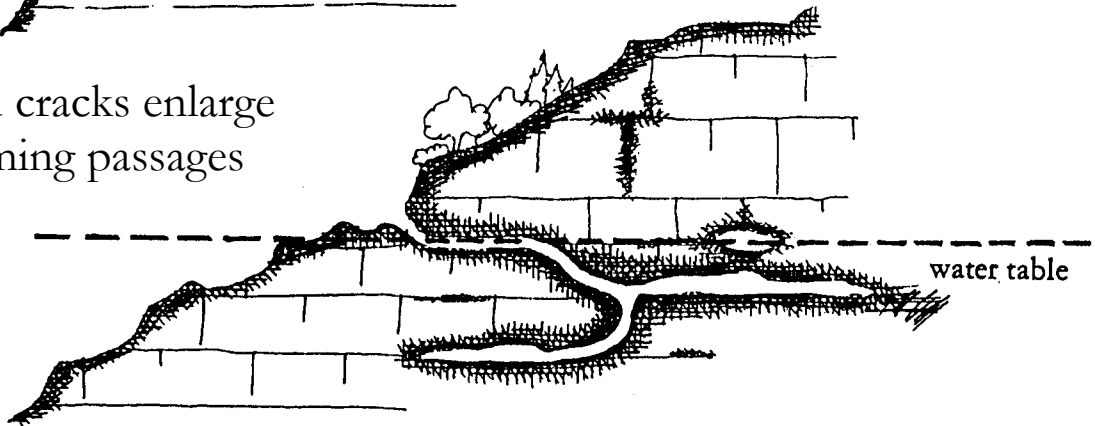
harvestman

# Limestone Cave Formation

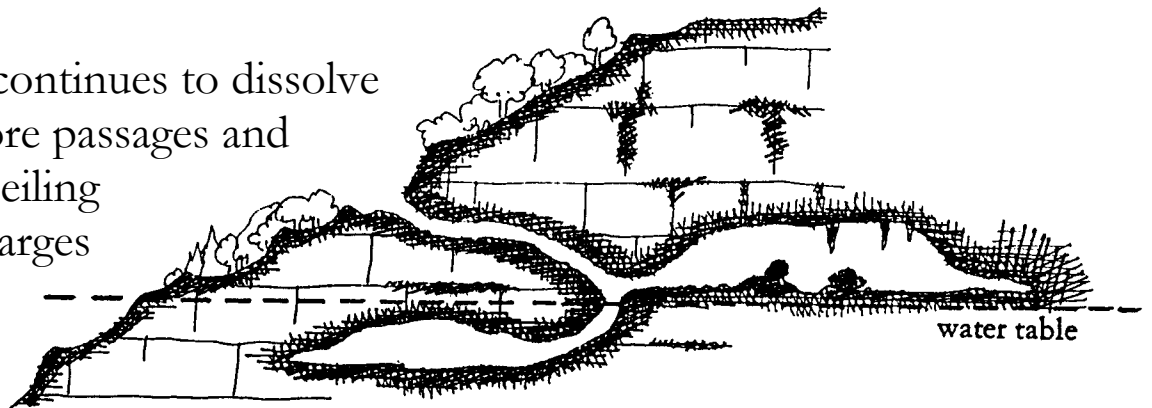
Water seeping and running through limestone enlarges cracks and fissures.



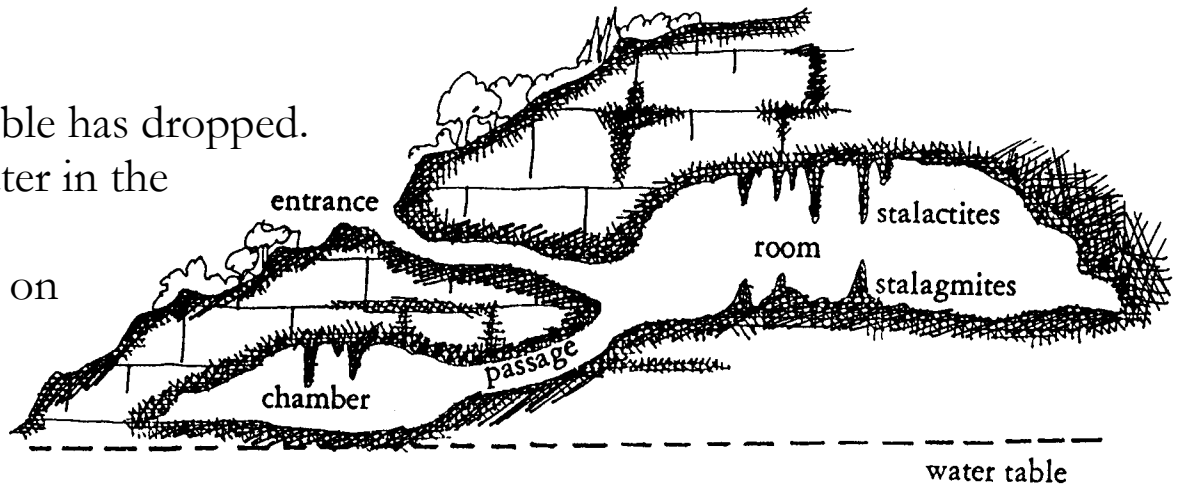
Fissures and cracks enlarge further, forming passages and rooms.



Limestone continues to dissolve forming more passages and chambers. Ceiling collapse enlarges the cave as well.



The water table has dropped. Dripping water in the cave forms speleothems on walls, floors and ceilings.



# CAVE FOOD PYRAMID

